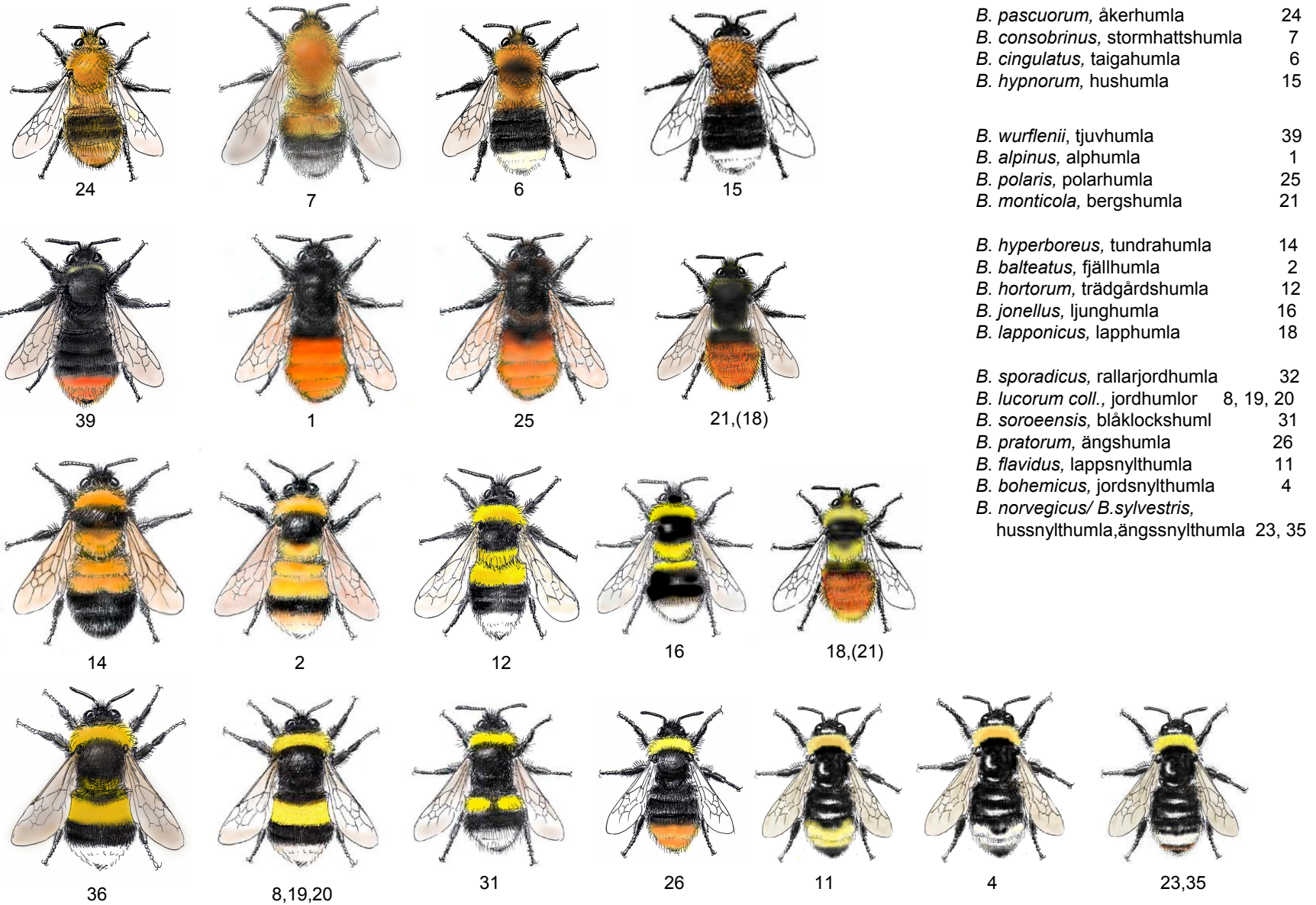


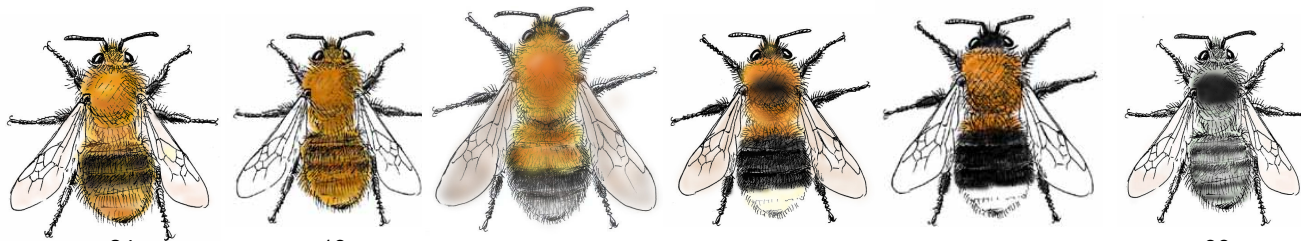
# Humlor (honor) i fjälltrakterna, subalpina och alpina regionen



## Släktet *Bombus*

<i>B. pascuorum</i> , åkerhumla	24
<i>B. consobrinus</i> , stormhattshumla	7
<i>B. cingulatus</i> , taigahumla	6
<i>B. hypnorum</i> , hushumla	15
<i>B. wurflenii</i> , tjuvhumla	39
<i>B. alpinus</i> , alhumla	1
<i>B. polaris</i> , polarhumla	25
<i>B. monticola</i> , bergshumla	21
<i>B. hyperboreus</i> , tundrahumla	14
<i>B. balteatus</i> , fjällhumla	2
<i>B. hortorum</i> , trädgårdshumla	12
<i>B. jonellus</i> , ljunghumla	16
<i>B. lapponicus</i> , lapphumla	18
<i>B. sporadicus</i> , rallarjordhumla	32
<i>B. lucorum coll.</i> , jordhumlor	8, 19, 20
<i>B. soroensis</i> , blålockshuml	31
<i>B. pratorum</i> , ängshumla	26
<i>B. flavidus</i> , lappsnylthumla	11
<i>B. bohemicus</i> , jordsnylthumla	4
<i>B. norvegicus/ B. sylvestris</i> , hussnylthumla, ängssnylthumla	23, 35

# Humlor (honor) i norrlandsterräng, boreala regionen



24

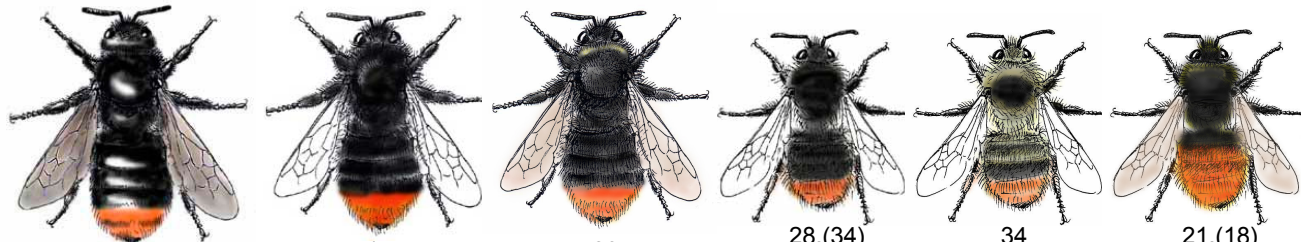
13

7

6

15

38



30

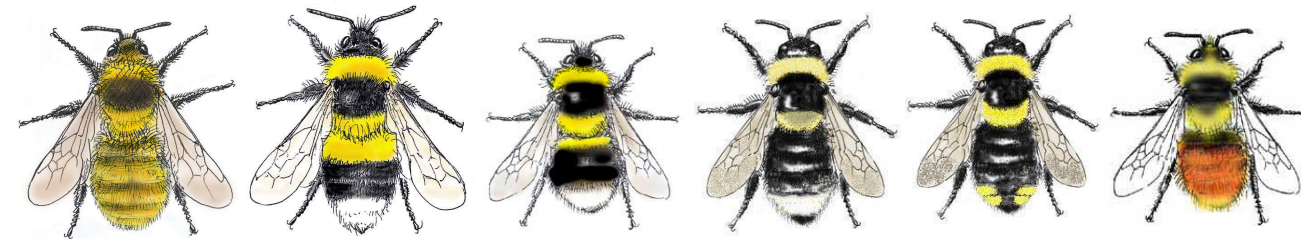
17

39

28,(34)

34

21,(18)



10

12

16

3

5

18,(21)



32

8,19,20

31

26

27

11

4

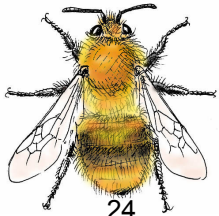
23,35

## Släktet *Bombus*

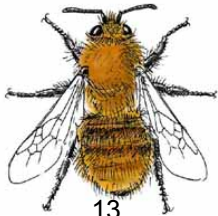
<i>B. pascuorum</i> , åkerhumla	24
<i>B. humilis</i> , backhumla	13
<i>B. consobrinus</i> , stormhattshumla	7
<i>B. cingulatus</i> , taigahumla	6
<i>B. hypnorum</i> , hushumla	15
<i>B. veteranus</i> , sandhumla	38
<i>B. rupestris</i> , stensnylthumla	30
<i>B. lapidarius</i> , stenhumla	17
<i>B. wurflenii</i> , tjuvhumla	39
<i>B. ruderarius</i> , gråshumla	28
<i>B. sylvarum</i> , haghumla	34
<i>B. monticola</i> , berghumla	21
<i>B. distinguendus</i> , klöverhumla	10
<i>B. hortorum</i> , trädgårdshumla	12
<i>B. jonellus</i> , ljunghumla	16
<i>B. barbutellus</i> , trädgårdssnylthumla	3
<i>B. campestris</i> , åkersnylthumla	5
<i>B. lapponicus</i> , lapphumla	18
<i>B. sporadicus</i> , rallarjordhumla	32
<i>B. lucorum coll.</i> , jordhumlor	8,19,20
<i>B. soroensis</i> , blåklockshumla	31
<i>B. pratorum</i> , ängshumla	26
<i>B. quadricolor</i> , broksnylthumla	27
<i>B. flavidus</i> , lappsnylthumla	11
<i>B. bohemicus</i> , jordsnylthumla	4
<i>B. norvegicus</i> / <i>B. sylvestris</i> , hussnylthumla, ängssnylthumla	23,35



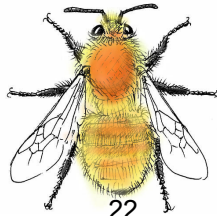
# Humlor (honor) i Mellansverige, hemiboreala regionen



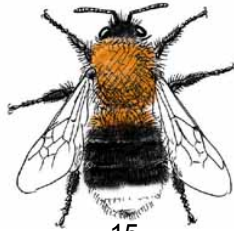
24



13



22



15

## Släktet *Bombus*

*B. pascuorum*, åkerhumla 24

*B. humilis*, backhumla 13

*B. muscorum*, mosshumla 22

*B. hypnorum*, hushumla 15

*B. subterraneus*, vallhumla 33

*B. rupestris*, stensnylthumla 30

*B. lapidarius*, stenumla 17

*B. ruderarius*/*B. sylvarum*  
gråhumla/ haghumla 28,34

*B. sylvarum*, haghumla 34

*B. distinguendus*, klöverhumla 10

*B. hortorum*, trädgårdshumla 12

*B. jonellus*, ljunghumla 16

*B. barbutellus*, trädgårdssnylthumla 3

*B. campestris*, åkersnylthumla 5

*B. terrestris*, mörk jordhumla 36

*B. lucorum coll.*, jordhumlor 8,19,20

*B. soroensis*, blåklockshumla 31

*B. pratorum*, ängshumla 26

*B. quadricolor*, broksnylthumla 27

*B. bohemicus*, jordsnylthumla 4

*B. sylvestris*/*B. norvegicus*  
ängssnylthumla/ hussnylthumla 35,23



33



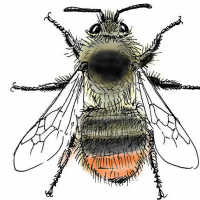
30



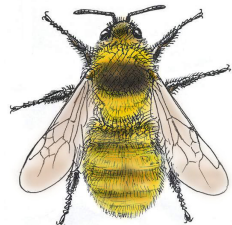
17



28,34



34



10



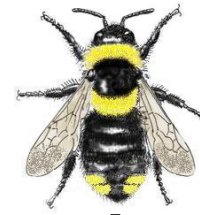
12



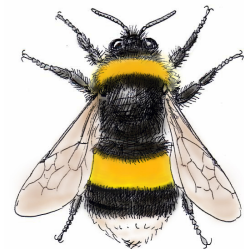
16



3



5



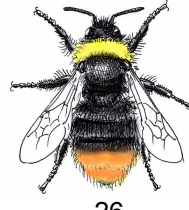
36



8,19,20



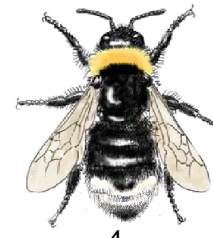
31



26



27

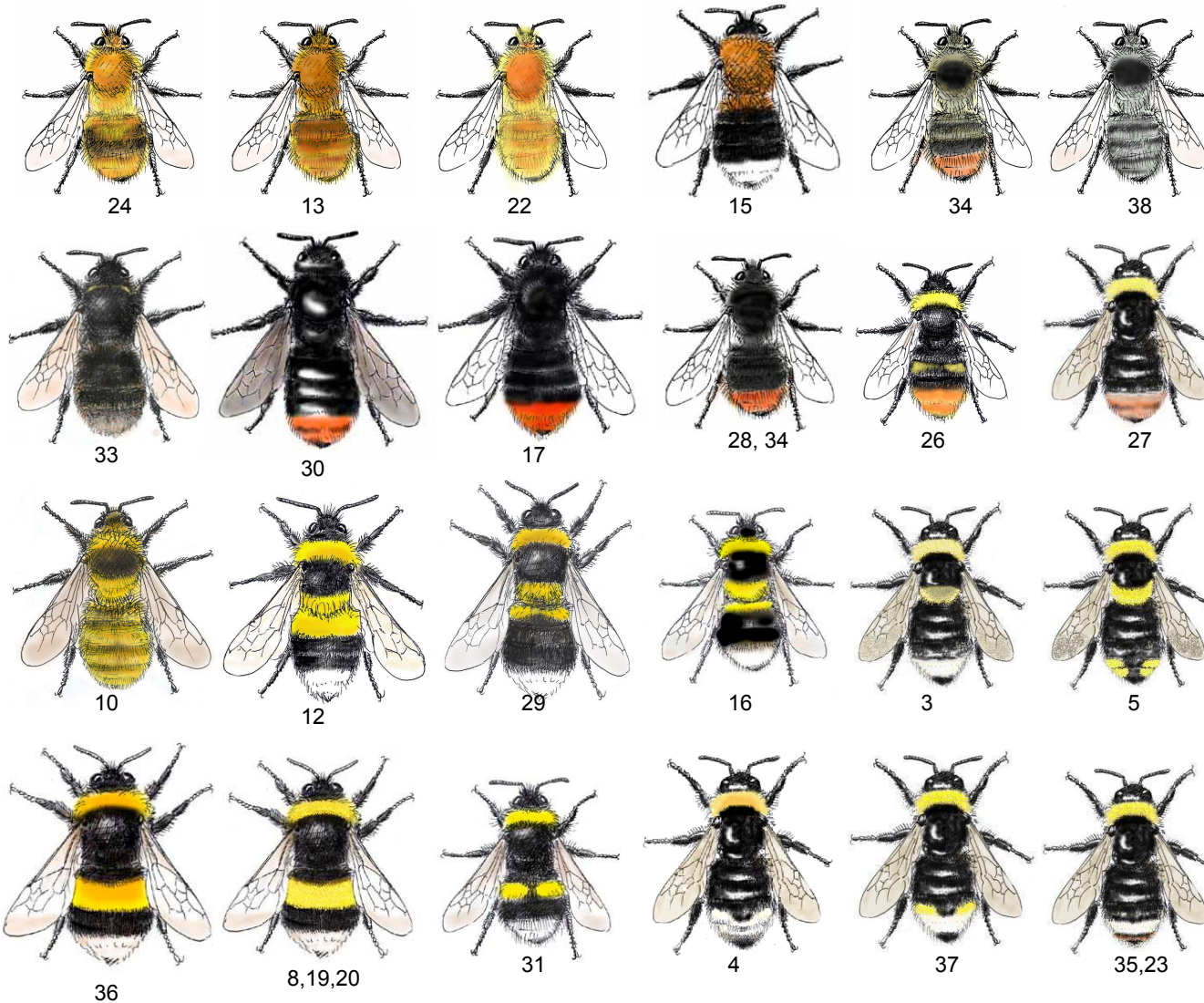


4



35,23

# Humlor (honor) i Sydsverige, nemoral regionen



## Släktet *Bombus*

<i>B. pascuorum</i> , åkerhumla	24
<i>B. humilis</i> , backhumla	13
<i>B. muscorum</i> , mosshumla	22
<i>B. hypnorum</i> , hushumla	15
<i>B. sylvarum</i> , haghumla	34
<i>B. veteranus</i> sandhumla	38
<i>B. subterraneus</i> , vallhumla	33
<i>B. rupestris</i> , stensnylthumla	30
<i>B. lapidarius</i> , stenumla	17
<i>B. ruderarius/ sylvarum</i> gräshumla/ haghumla	28,34
<i>B. pratorum</i> , ängshumla	26
<i>B. quadricolor</i> , broksnylthumla	27
<i>B. distinguendus</i> , klöverhumla	10
<i>B. hortorum</i> , trädgårdshumla	12
<i>B. ruderatus</i> , fälthumla	29
<i>B. jonellus</i> , ljunghumla	16
<i>B. barbutellus</i> , trädgårdssnylthumla	3
<i>B. campestris</i> , åkersnylthumla	5
<i>B. terrestris</i> , mörk jordhumla	36
<i>B. lucorum coll.</i> , jordhumlor	8,19,20
<i>B. soroeensis</i> , blåklockshumla	31
<i>B. bohemicus</i> , jordsnylthumla	4
<i>B. vestalis</i> , sydsnylthumla	37
<i>B. sylvestris/ B. norvegicus</i> ängssnylthumla, hussnylthumla	35,23